

SolderSmart[®] MAX

Maximum of flexibility and quality.



Do you want a fully automated soldering process?

Traceability needed?

Would you like to choose the heating technology?

SolderSmart MAX is your perfect solution for fully automated soldering process reaching highest quality standards in the market.

High and stable soldering quality without any compromises



WORKING SURFACE
425 x 500mm

AXIS ACCURACY
+/- 0.2mm

SUPPLY VOLTAGE
100 / 230 VAC,
50 / 60 Hz

DIMENSIONS
1150x965x2000mm
(Basic system)

Subject to technical changes

SPEED
~ 400mm/s

WEIGHT
> 350kg *(Basic)*

POWER
< 2kW

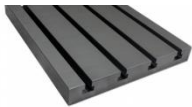
COMPONENT HEIGHT
Max. 200mm
(Drive-over height 340mm)

Advantages

- › **Modularity** to configure your perfect automated soldering solution
- › Computer based process **control and monitoring** of all parameters
- › **VisionSystem** with **Position correction, Traceability & Solder joint check**
- › **Precise Wire feeder** for solder wire diameter (0.5mm, 0.8mm, 1.0mm)
- › Efficient heating technologies for **low energy costs** and **maintenance**

Handling systems

Groove plate



Drawers



Transfer system



Modularity



Soldering systems

Iron soldering



Laser soldering



Inductive soldering



ELMOTEC
We solder the future!

📍 **ELMOTEC AG**
Gewerbstrasse 30
CH-5314 Kleindöttingen

☎ +41 (0)56 245 65 65
✉ info@elmotec.ch
🌐 www.elmotec.ch